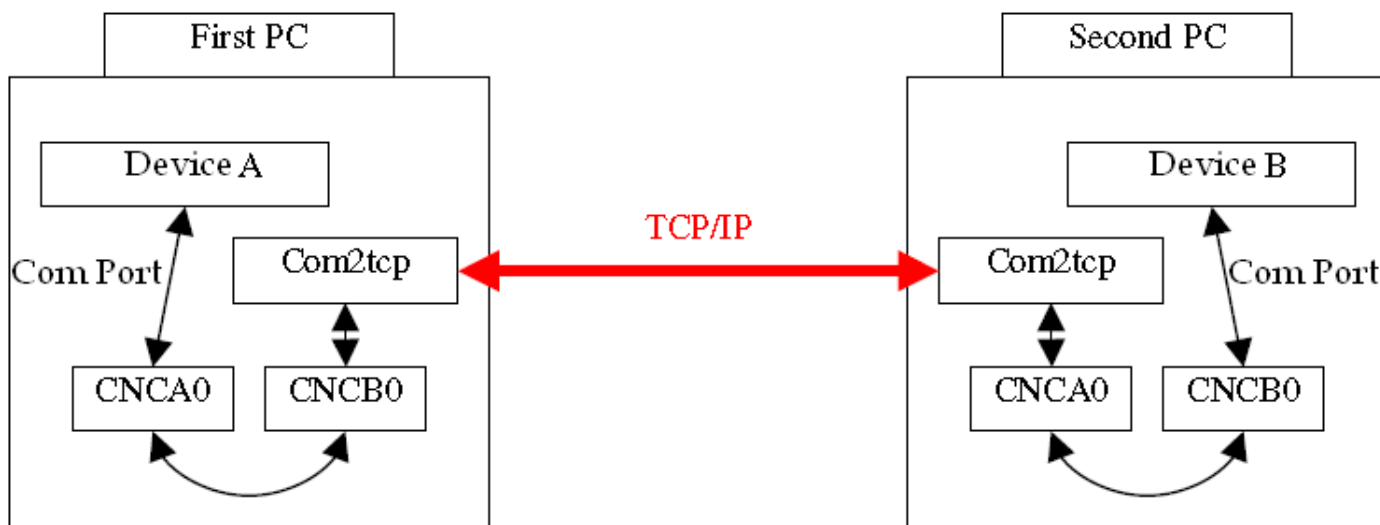


虛擬串列埠使用說明

用途

com0com 的用途是讓使用者無須更改電腦端應用程式也可以達到傳送 TCP/IP 的格式。

方塊圖

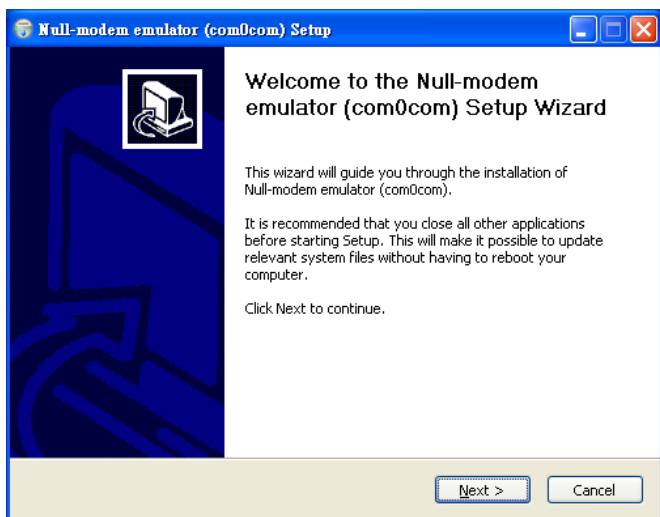


步驟一

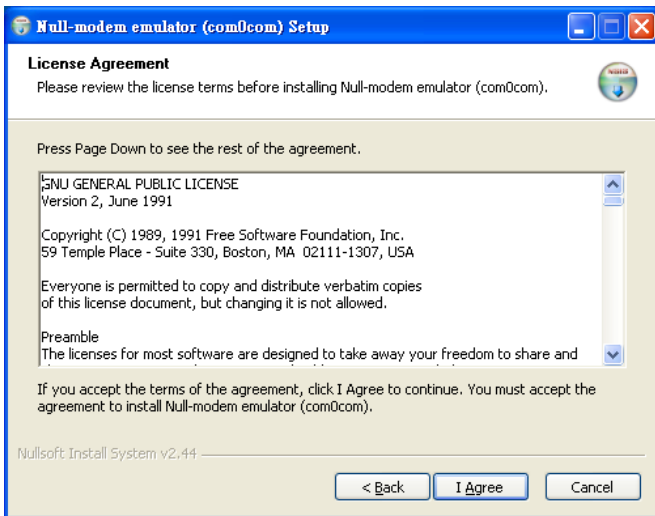
請先安裝“com0com”和“S2E-conf-5821.msi”

(S2E-conf-5821.msi 安裝方式請參考“S2E Browser 使用說明”)

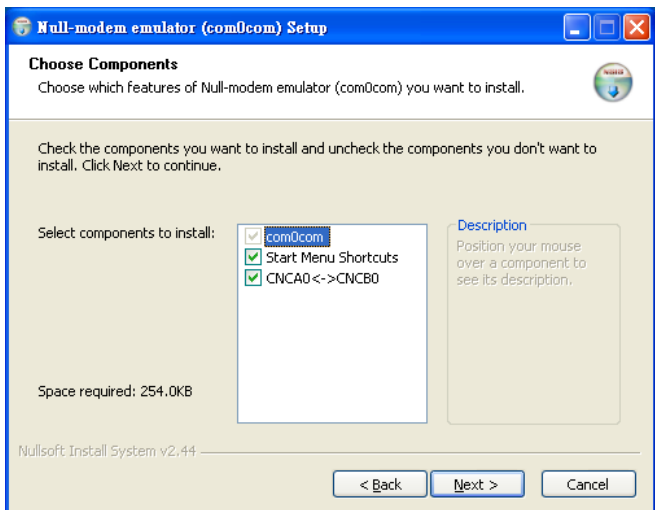
請按 Next



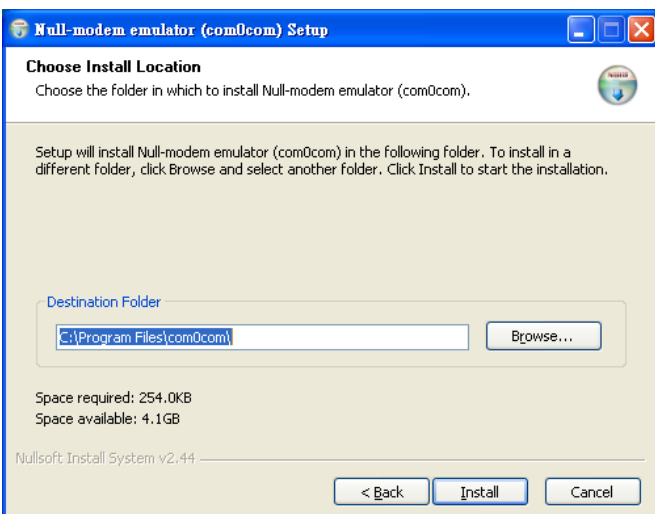
請按 I Agree



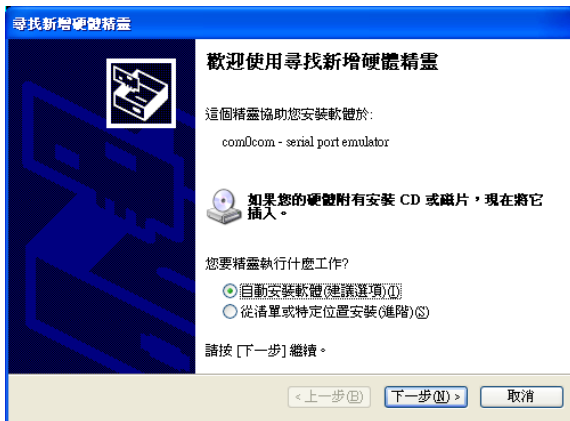
請按 Next (不要變更設定)



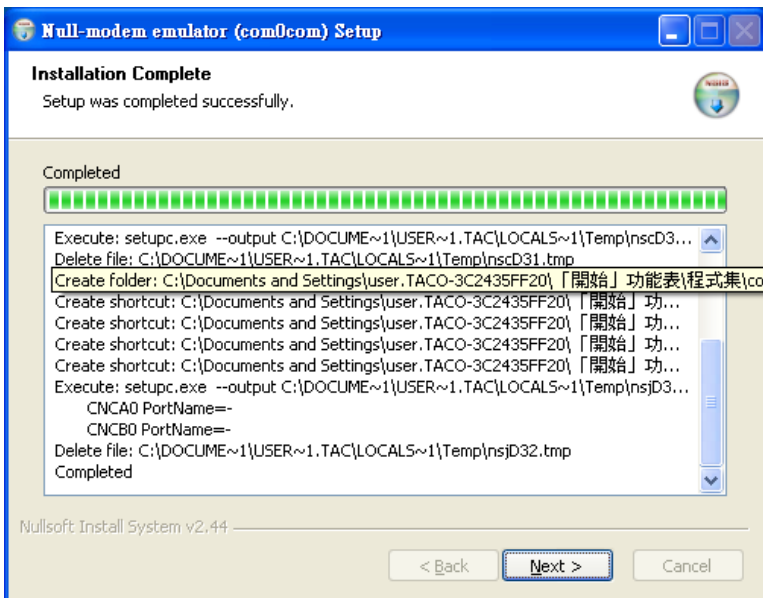
選擇要安裝磁碟機按路徑後按 Install



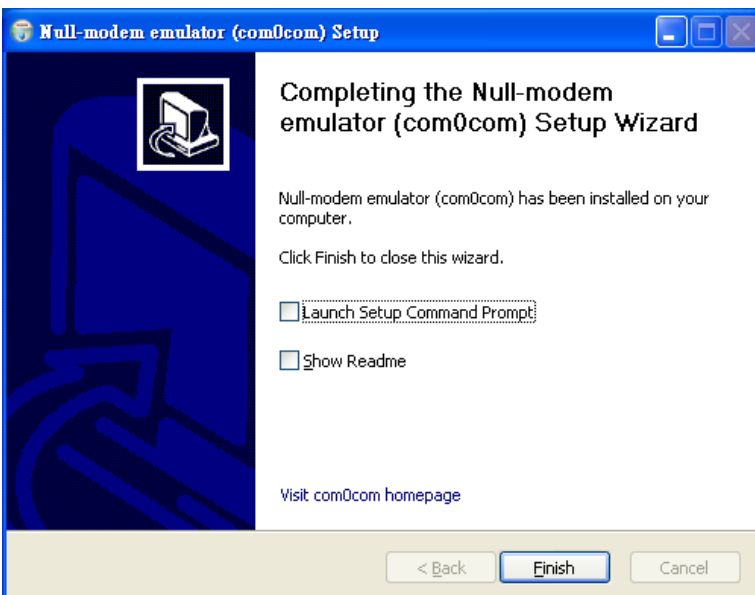
請按下一步，安裝完成後按完成。(此步驟要做兩次)



以上步驟兩次後按 Next



按 Finish 即完成安裝。



步驟二

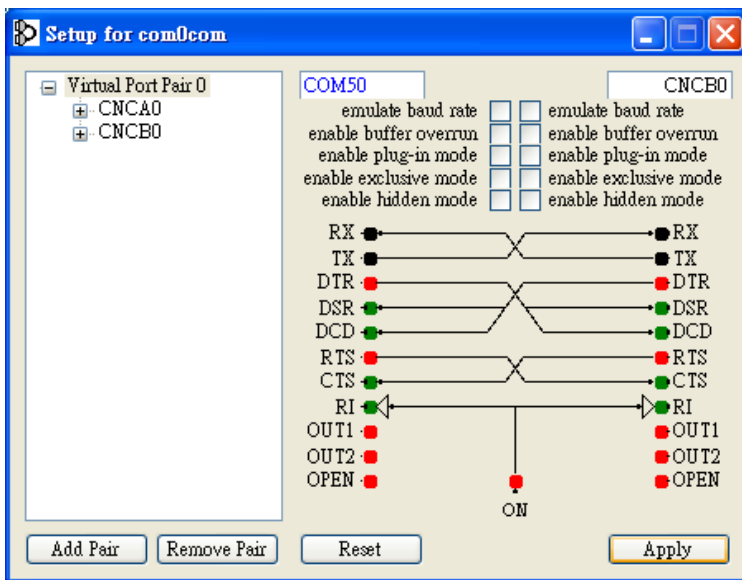
開啟檔案路徑“ 程式集 >> com0com >> Setup” 。

開啟檔案路徑“ 程式集 >> S2E Micro>> Serial-to-Ethernet Configuration

>> S2E PC Configuration” 。

步驟三

此程式為設定虛擬串列埠編號，設定完成後請案 Apply、增加請按 Add Pair、刪除請按 Remove Pair 。



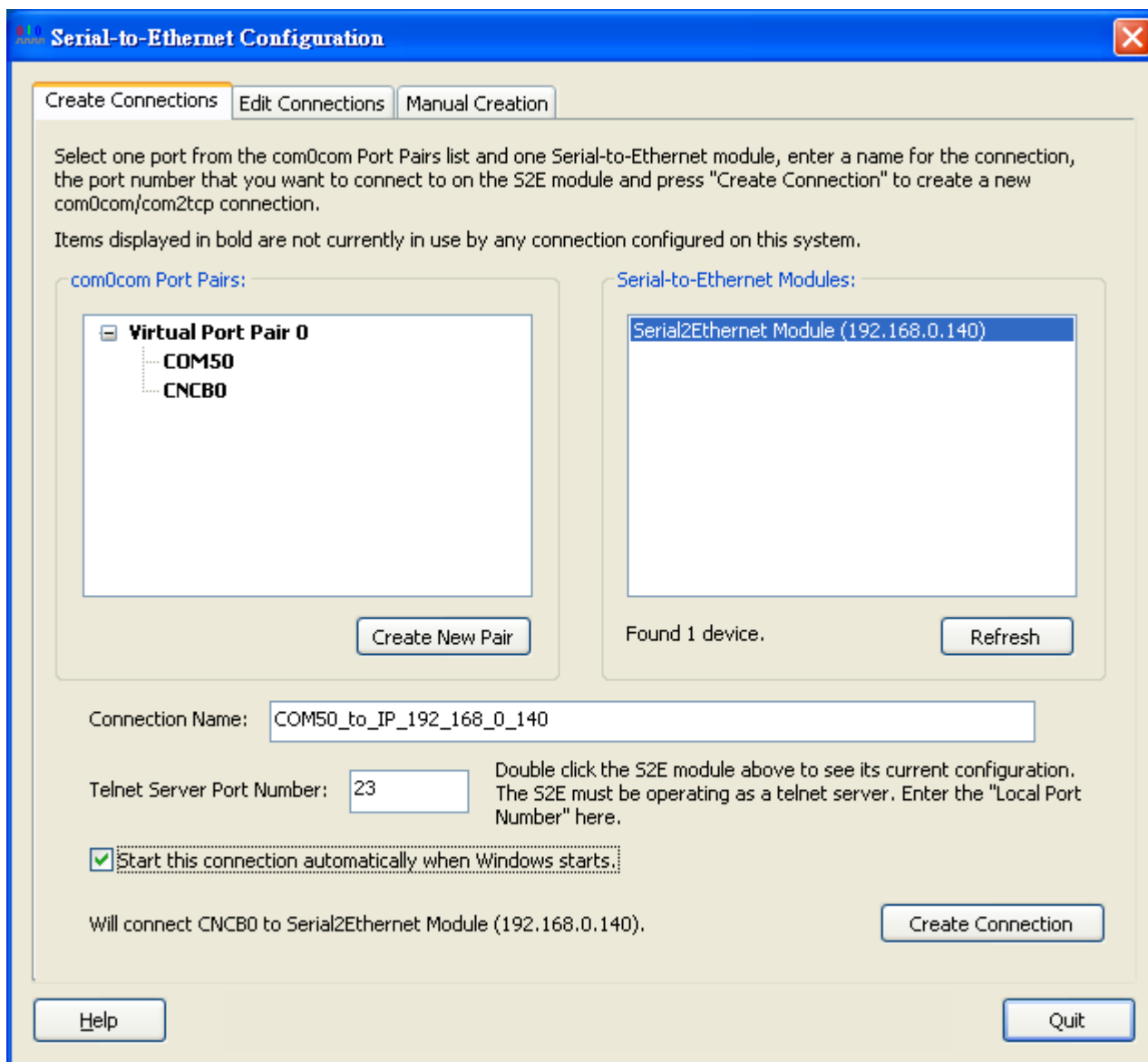
步驟四

開啟 Configuration 後右邊視窗會出現同網域中的 S2E Module，左邊為剛剛設定的 COM port 編號

若右邊視窗出現多組 IP address 選擇其中一組與 CNCEBx 連結，Connection Name 自行命名並將選

取選像打勾，Telnet Server Port Number 預設值為 23 或 26，以上欄位都填寫完畢後請按 Create

Connection 。

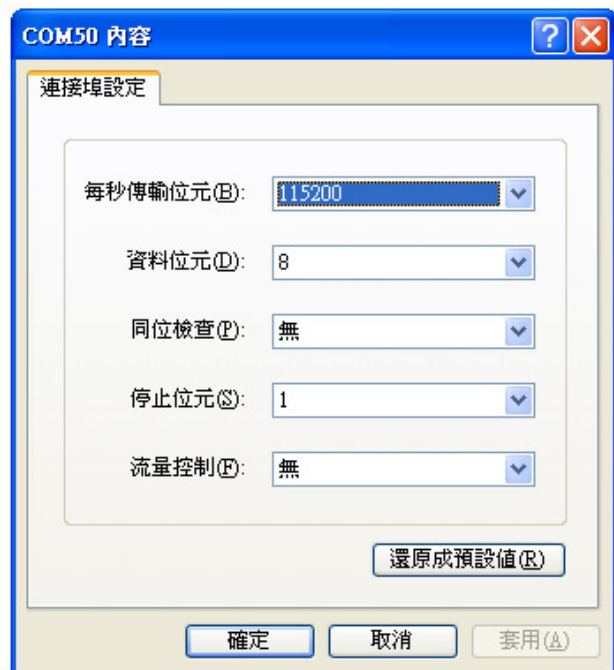
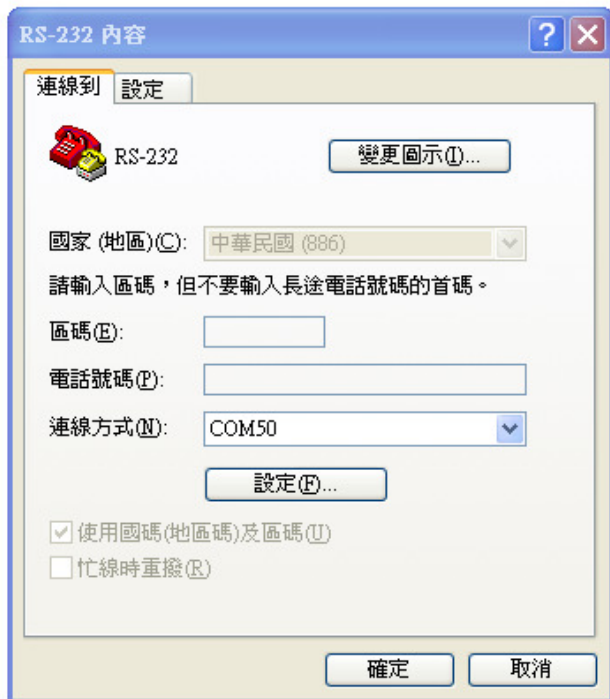


步驟五

測試虛擬串列埠 COM50 是否與 IP192.168.0.140 有連結?

開啟超級終端機 >> 內容 >> 連線方式選 COM50

設定 >> 連接埠設定 >> 115200, 8, N, 1, 無 (此設定須與網頁裡的 Port0 ro Port1 Settings 一致)



Current port settings:

	Port 0 (RS232)
Baud Rate:	115200 bits/second
Data Size:	8 bits/character
Parity:	None
Stop Bits:	1 bit(s)
Flow Control:	None
Local Telnet Port Number:	23
Remote Telnet Port Number:	N/A
Telnet Mode:	Server
Telnet Protocol:	Telnet
Telnet Server IP:	N/A
Telnet Timeout:	0 seconds

步驟六

開啟檔案路徑” 程式集 >> S2E Micro>> Serial-to-Ethernet Configuration

>> S2E Launcher” 。

注意! 連線中此視窗不可關閉

```
C:\Program Files\S2E MicroSerial-to-Ethernet Configuration\com2tcp.exe
OpenCOM("\\\\.\\CNCB0", baud=19200, data=8, parity=no, stop=1) - OK
DSR is ON
WaitComReady() - OK
Connect("192.168.0.140", "23") - OK
InOut() START
DSR is ON
RECU: DO 3
SEND: WONT 3
RECU: DO 44
SEND: WONT 44
RECU: DONT 3
RECU: DONT 44
DSR is OFF
InOut() - STOP
Disconnect() - OK
```

步驟七

開啟 Device COM17 Port 測試

The screenshot shows a Windows desktop with two RS-232 terminal windows. The left window, titled 'RS-232 - 超級終端機', displays the output of a program: 'OpenCOM("\\\\.\\CNCB0", baud=19200, data=8, parity=no, stop=1) - OK', 'DSR is ON', 'WaitComReady() - OK', 'Connect("192.168.0.140", "26") - OK', 'InOut() START', 'DSR is ON', 'RECU: DO 3', 'SEND: WONT 3', 'RECU: DO 44', 'SEND: WONT 44'. The right window, titled 'rs232 - 超級終端機', displays the received data 'abcdefg'. The status bar at the bottom of the windows shows '連線 00:01:04 ANSIW 115200 8-N-1 SCROLL CAPS NUM 顯 列印'.